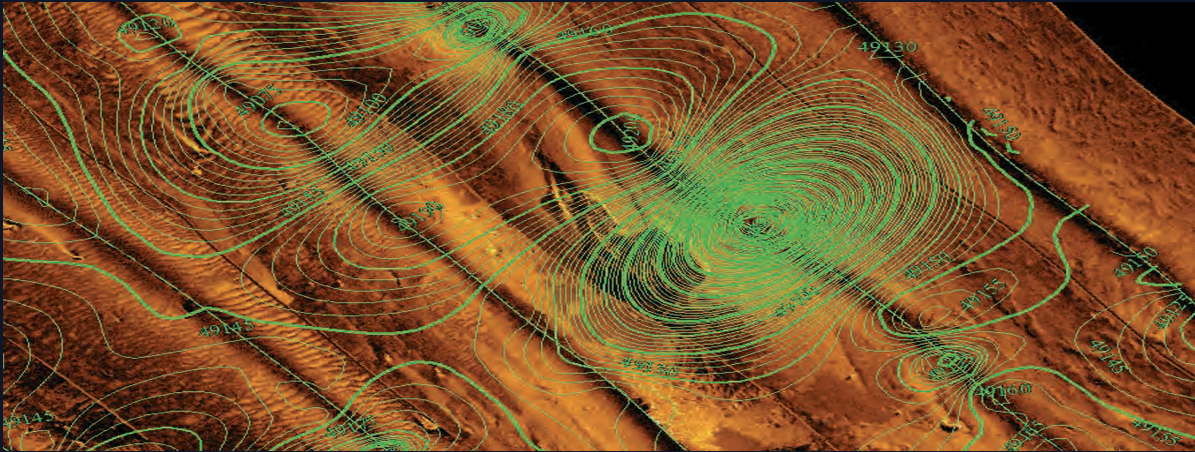


MAGNETOMETRY

SonarWiz: The Industry Standard for Geophysical Processing



Real-Time Acquisition & Post-Processing

- Simultaneously acquire magnetometer, navigation, fathometer, payout meter, and sonar data.
- Includes full navigation correction, filtering, smoothing, and data repair tools.
- Align anomalies with sidescan targets using interactive map correction.
- Available as a standalone module or included in SSS/SBP real-time licenses and the Office Post-Processing Suite.

Digitizing & Targeting

- Automatically or manually detect magnetic anomalies in the profile view.
- Visualize anomalies in the plan view or alongside sidescan waterfalls.
- Automatically assign attributes based on proximity to known features (e.g., pipelines).
- Streamline interpretation and reporting with integrated tools.

Visualization & Reporting

- Display full magnetic traces as color-coded stick plots on the map.
- Interpolate magnetic data into 3D surfaces for integration with sidescan and sub-bottom data.
- Export anomalies and visualizations as georeferenced images, GIS layers, or MS Office reports.

Licensing & Compatibility

Purchase module as part of bundles offered on www.chesapeaketech.com

Supported Interfaces

- AquaScan AX2000
- GEM Systems: 19M, 19T
- Geometrics: G-881, G-882, MagElement
- Marine Magnetics: Standard & Depth
- ...and many more.

Supported File Formats

Templates available for:

- AquaScan, EdgeTech (JSF), GEM (MagLog), Geometrics, Marine Magnetics, Hypack (RAW), Generic (CSV, TXT, XYZ), SonarWiz

Recommended system: 64-bit Windows, DirectX 11+, 8GB RAM, SSD, USB

