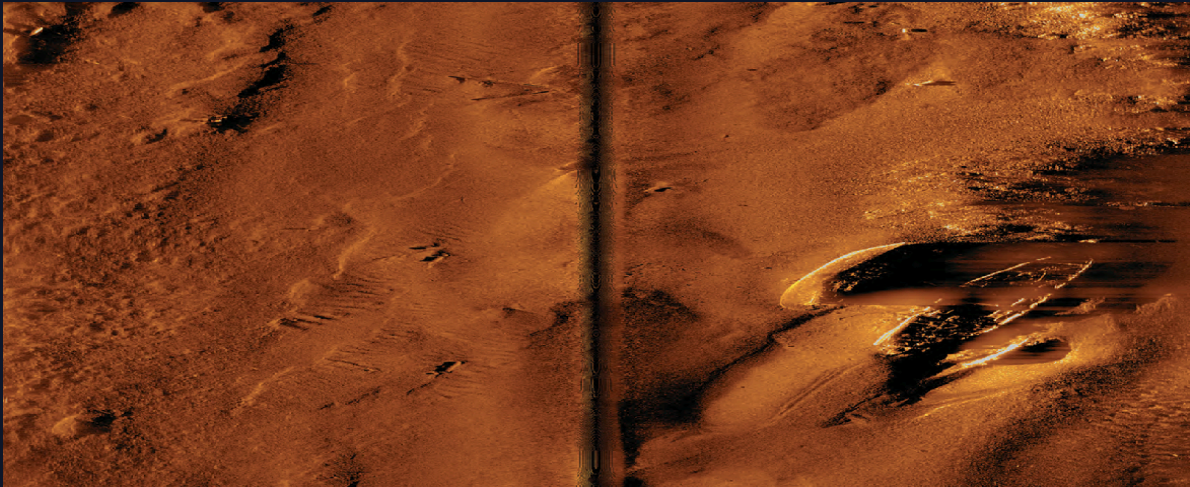


SIDESCAN

SonarWiz: The Industry Standard for Geophysical Processing



Contact Management

- Chesapeake Technology's contact management system supports large-scale sidescan sonar surveys with speed, accuracy, and flexibility.
- Contacts can be marked directly from the waterfall or plan view and are synchronized across the project.
- Search across multiple tracklines or merge overlapping detections.
- Supports over 30 automatic and user-defined fields for advanced queries.
- Navigation updates automatically recalculate contact positions.
- Export results as georeferenced images, MS Office-compatible reports, or GIS-ready layers.

Data Acquisition

SonarWiz captures sonar, navigation, fathometer, payout meter, and magnetometer data simultaneously. Customize real-time displays to include sidescan and sub-bottom waterfalls, contact target strips, and fully processed mosaics. Provides full control and visibility throughout the survey process.

Post Processing

Enhance survey data with tools for navigation correction, gain control, and signal filtering. Use the Seabed Characterization Tool for sediment classification. Export processed data to XTF, GeoReferenced Image, GIS, and CAD formats for integration into mapping workflows.

Licensing

Purchase module as part of bundles offered on www.chesapeakeotech.com

File Formats

Supported formats: 81S, 83P, 872, ALL, CM2, COD, DAT, GCF, H5, HSX, JSF, KALL, LOGDOC, MST, RAW, RDF, RFF, QPD+DB, SDF, SDS, SES3, SL2, SL3, SMB, SXR, SWF8, TIL, XSE, XTF, GSF.

Supported Interfaces

- SonarWiz supports a wide range of sidescan sonar systems:
- Atlas NA-Marine Sonic: Arc Explorer, HDS, SeaScan
- Analog 16-bit Sidescans- C-Max: CM2
- EdgeTech: 4125/4200, 4600, 6205
- Falmouth Scientific: HMS-624, Swordfish
- GeoAcoustics: PuISAR, GeoScan
- Imagenex: SportScan, Yellowfin
- Jetasonic- Klein: 3000, 3900, 4900, 5000, 5900, DeepSled, MA-X 600
- PingDSP: 3DSS
- SyQuest: Aquascan
- Teledyne-Odom: 1624
- Tritech: Starfish, Seakin

