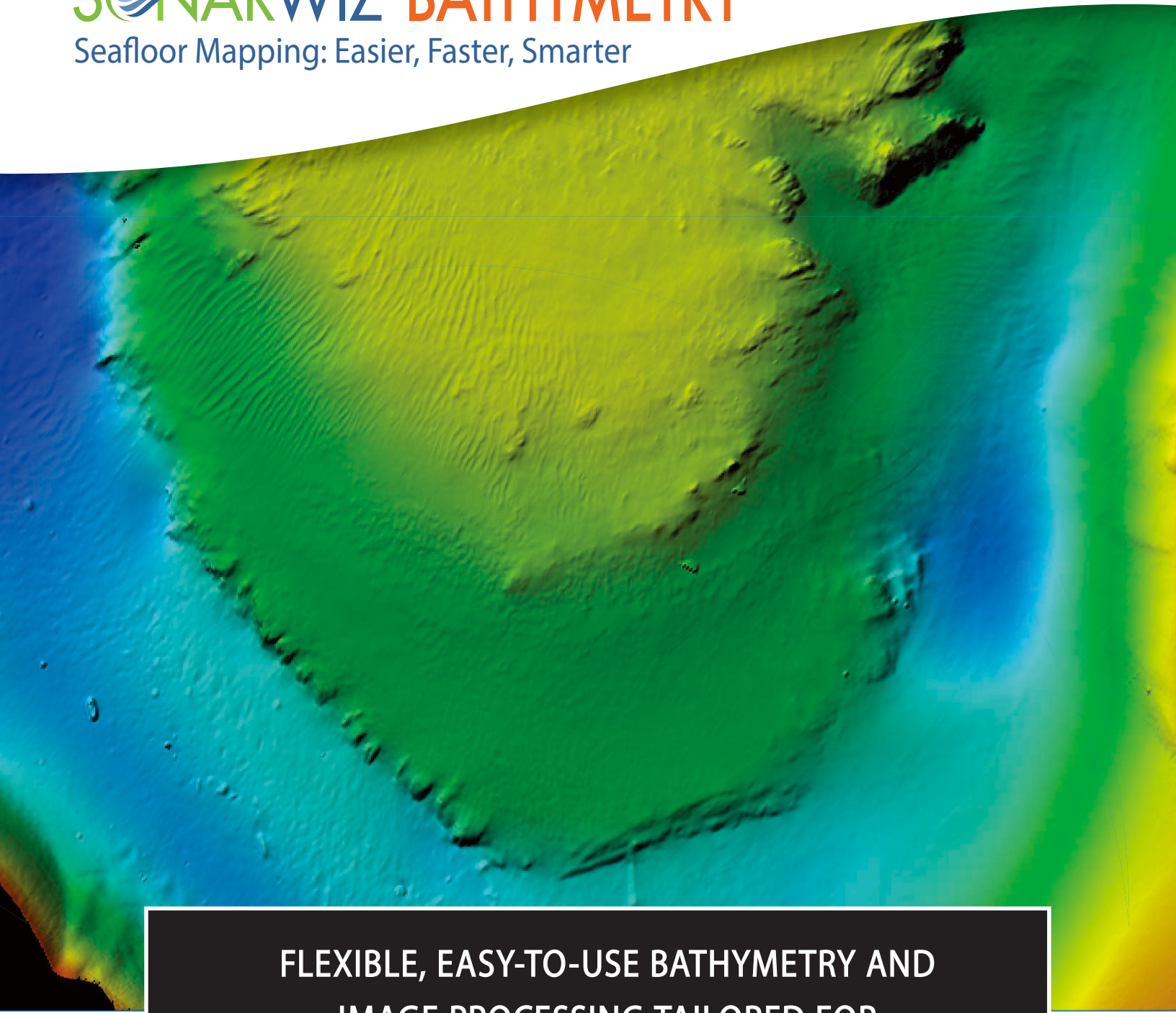


# SONARWIZ BATHYMETRY

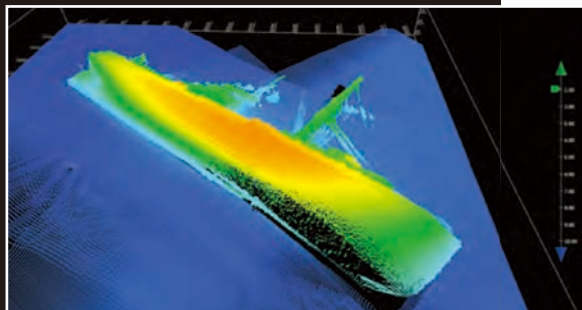
Seafloor Mapping: Easier, Faster, Smarter



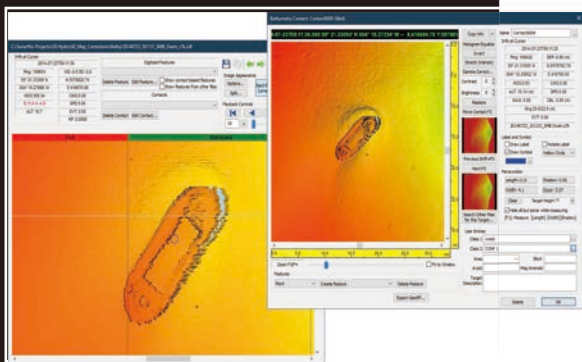
**FLEXIBLE, EASY-TO-USE BATHYMETRY AND  
IMAGE PROCESSING TAILORED FOR  
GEOPHYSICAL EXPLORATION AND ANALYSIS**

- Intuitive workflow saves time and reduces training costs
- Impressive image processing results for most sonars
- Comprehensive calibration, QA/QC and data export utilities
- Integrates with Sidescan and Subbottom modules for multisensor projects

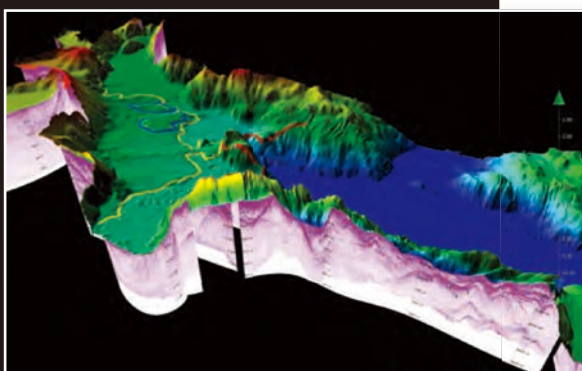
# SONARWIZ BATHYMETRY



Advanced 3D editing



Target picking and cataloging



Integrated data analysis environment

## BATHYMETRY

SonarWiz Bathymetry contains all the tools you need to calibrate, edit, QC and render your bathymetric data, including support for AUV surveys with post-process navigation and attitude injection tools. SonarWiz has special support for geophysical and exploratory surveying offering 6 different gridding algorithms, volumetric and difference calculators, cross-check reports, vector contouring and more. Export raw and processed data to more than 20 supported GIS and CAD formats.

## IMAGE PROCESSING, TARGETING

SonarWiz processes the acoustic backscatter simultaneously with the bathymetric soundings. This means that you can switch between rendering bathymetry or acoustic backscatter on the fly in any of the editors or displays. SonarWiz statistical normalization algorithms optimized your imagery for habitat classification and mosaic generation without degrading the image resolution. MBES Targets can be picked and cataloged using the same powerful contact utilities available for sidescan.

## VISUALIZATION

SonarWiz contains interactive 3D visualization tools where bathymetry and acoustic backscatter can be easily combined with sidescan, sub-bottom probe (SBP) and magnetometer data to make impressive visualizations of your survey area.

## LICENSING

SonarWiz is modular and each component can be purchased separately, as an add-on, or as part of a Field or Office bundle. We offer dongle and dongle-free licensing (DFL) options. DFL licenses eliminate the risk of lost or stolen dongles and can be transferred between any two internet-connected PCs in seconds. Network and Academic options are also available.

## SUPPORTED INTERFACES

Edgetech 4600/6205; GeoAcoustics GeoSwath, Klein 5900; Marine Electronics Dolphin SeaView, Mesotech M3, NORBIT iWBMS, PingDSP 3DSS, R2Sonic 202X, Reson SeaBat, Velodyne VLP-16/VLP-32

## FILE FORMATS

83P, ALL, D1P, FBT, FLS, GSF, HS2x, HSX, JSF, KMALL, NWSF, RDF, RFF, S7K, SDF, SL3, SXI, XSP, TIL, WMBF, XSE, XTF

Recommended PC 64bit, Win 10, DirectX11+, 8GB, SSD, USB port.

CUSTOMER FRIENDLY SUPPORT YOU CAN COUNT ON

- CUSTOM ONSITE TRAINING • WEBINARS • WORKSHOPS • TUTORIALS
- BI-WEEKLY PRODUCT UPDATES • 24/7 DOWNLOADS • FREE TRIALS

**CHESAPEAKE**  
**TECHNOLOGY**  
www.chesapeaketech.com