

DIDSON DIVER HELD

SEE WHAT OTHERS CAN'T

APPLICATIONS:

- ◆ Underwater Inspection
- ◆ Monitor Operations & Divers
- ◆ Construction Monitoring
- ◆ Hull & Berth Inspection
- ◆ Target Detection & Identification
- ◆ Port & Harbor Security
- ◆ Search & Recovery

IDENTIFICATION FREQUENCY:

1.8 MHz
15m Range

DETECTION FREQUENCY:

1.1 MHz
35m Range

DEPTH RATING:

100m



DIDSON Technology

The Next Generation in Clarity

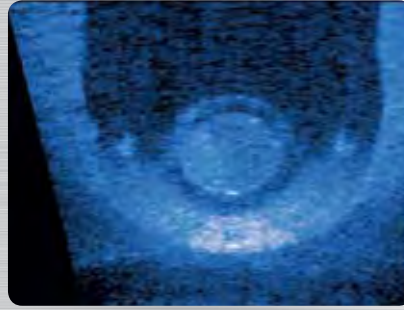
With simple one handed operation the DIDSON DH makes it easy to capture near-video-quality images, even in the most turbid waters.

Switching between the 1.1 MHz and the 1.8 MHz frequencies, users can find their targets and get the details they need. A mask mounted color display that updates up to 15 frames per second makes real-time work fast, easy and accurate. Battery life up to three hours powers fully autonomous operation and an optional cable allows topside viewing and power input. The DIDSON DH is ideal for teams conducting hull and berth sweeps, underwater inspection, and search and recovery.

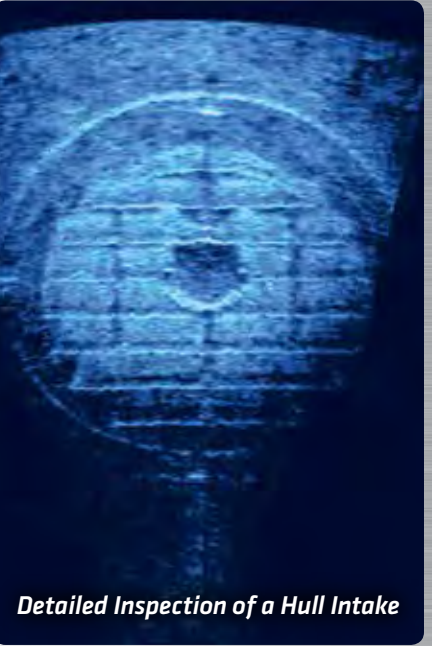
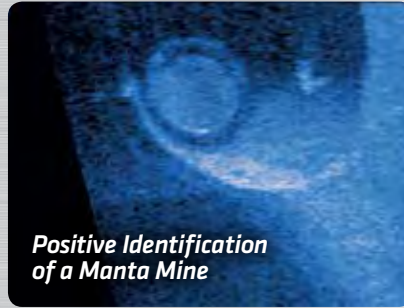


FEATURES:

- ◆ Thumb controls for power, range, zoom and record
- ◆ 8 GB of memory for a minimum of four hours of recording
- ◆ Mask mounted display with color SVGA resolution
- ◆ Can be mounted on a platform or shaft
- ◆ Sensors for compass heading, roll, pitch and depth
- ◆ Completely Autonomous
- ◆ Dynamic Focus



Positive Identification of a Manta Mine



Detailed Inspection of a Hull Intake



Autonomous Dual Frequency High Definition Diver Held Sonar with UHMD allows a diver to work in zero visibility



The Underwater Head Mounted Display (UHMD), provides detail to locate and identify targets, and works when most needed.

SPECIFICATIONS:

Number of Transducer Beams	96
Beam Width	0.3°
Field-of-view	28°
Frame Rate	Up to 15 frames/sec
Power Consumption	28 Watts typical
Weight in Air	8.1 kg
Weight in Water	Neutral
Dimensions	43cm x 20cm x 17cm
Lithium Ion Battery	Up to 3 hours of operation



soundmetrics.com

425-822-3001 | sales@soundmetrics.com

PART #015339 | REV A