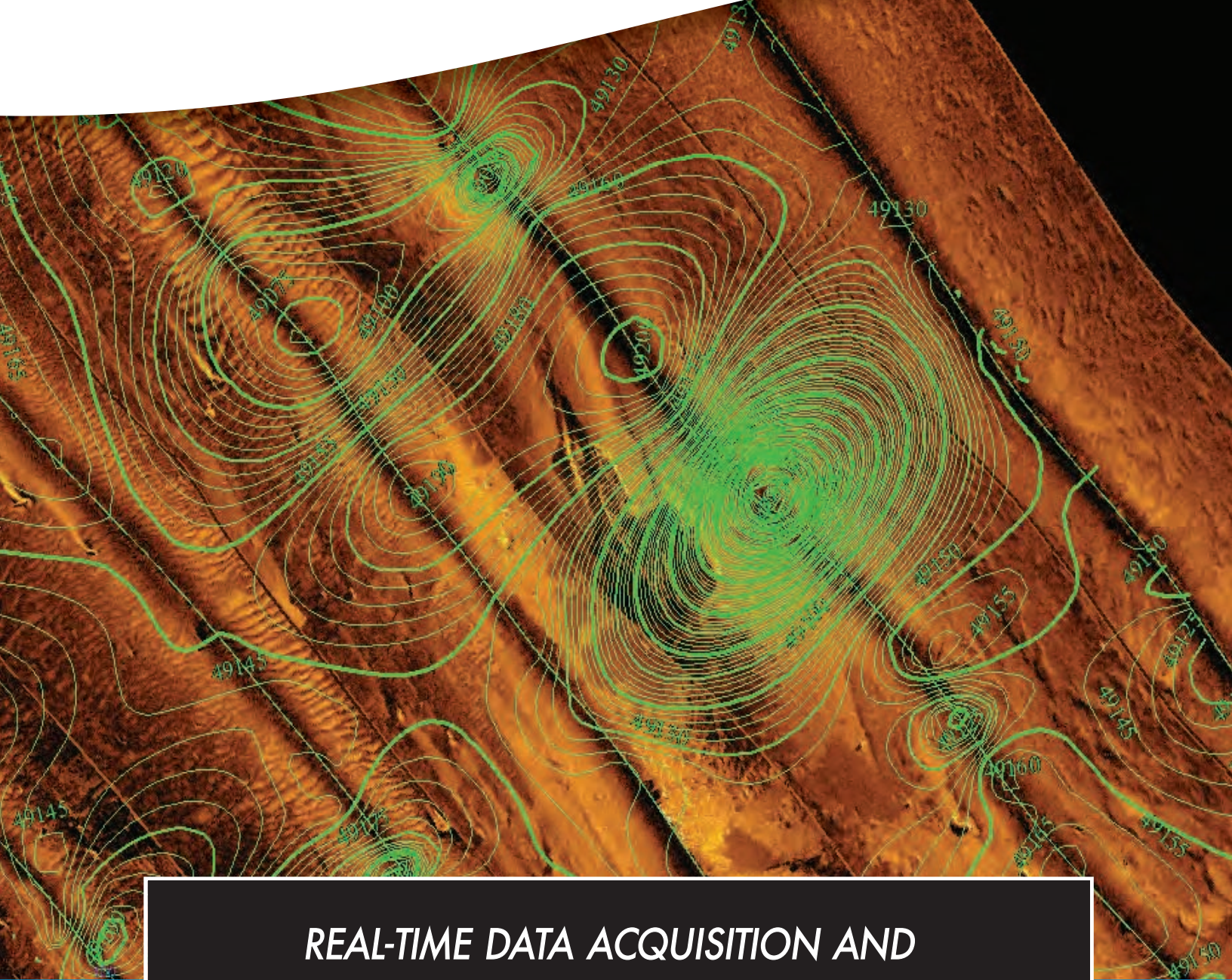





# SONARWIZ MAGNETOMETRY

Seafloor Mapping: Easier, Faster, Smarter

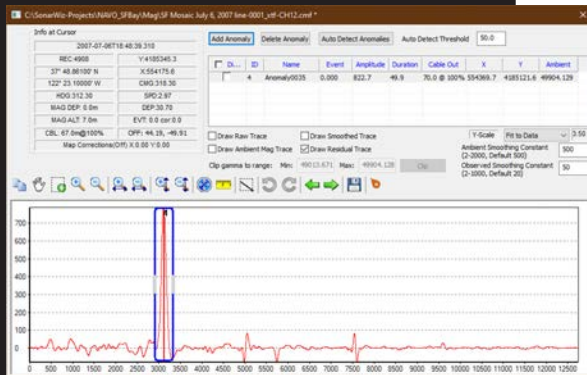


## ***REAL-TIME DATA ACQUISITION AND POST-PROCESSING FOR MAGNETOMETER DATA***

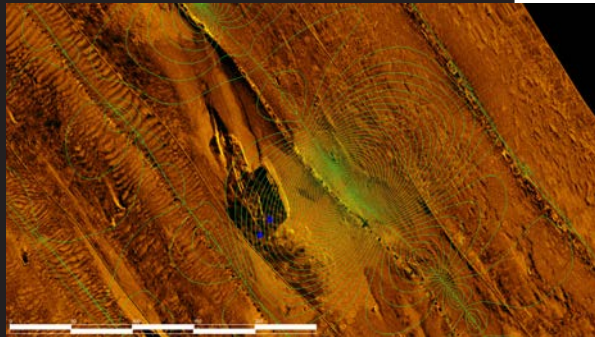
-  Provides full range of navigation filtering and smoothing of magnetometry signals
-  Automatically or manually mark magnetic anomalies
-  Visualize your data in two or three-dimensions



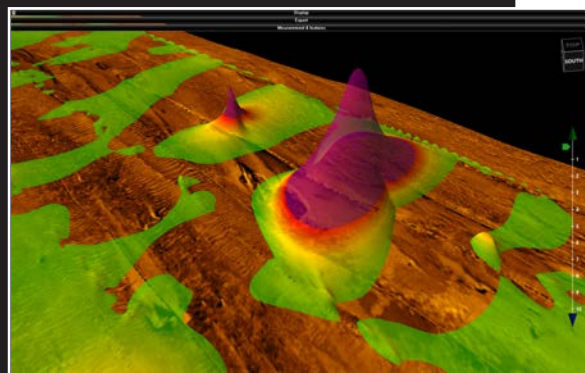
# SONARWIZ MAGNETOMETRY



Digitize magnetic anomalies and identify targets.



Grid and contour the magnetic field and display it on backscatter imagery.



Create 3D surfaces from your magnetic data to make powerful visualizations.

## DATA PROCESSING

SonarWiz Magnetometry provides the full range of navigation, filtering, smoothing, and repair that SonarWiz offers for sidescan and subbottom post-processing. Anomaly positions can also be recentered on sidescan targets using the interactive map correction features in SonarWiz. Magnetometry (Mag) real time acquisition (RT) included with all SSS/SBP RT licenses. Mag sold as add-on module or in the full Office Post-Processing Suite.

## DIGITIZING

SonarWiz can detect magnetic anomalies automatically or they can be placed manually in the profile view. Once identified, anomalies can be shown on the plan view map or nearby sidescan waterfalls to help aid in target identification. SonarWiz can also be configured to automatically assign attribute information to anomalies based on the location of known pipeline or other structures.

## VISUALIZATION AND REPORTING

SonarWiz offers several useful magnetometer visualization and export options. In addition to individual anomaly markers, the entire magnetic trace can be displayed on the map as a color-coded stick plot. It is also easy to interpolate the magnetic data into a 3D surface for display with other SonarWiz sidescan and sub-bottom data.

## LICENSING

SonarWiz is modular and each component can be purchased separately, as an add-on, or as part of a Field or Office bundle. We offer dongle and dongle-free licensing (DFL) options. DFL licenses eliminate the risk of lost or stolen dongles and can be transferred between any two internet-connected PCs in seconds. Network and Academic options are also available.

## SUPPORTED INTERFACES

AquaScan AX2000, GEM 19M, 19T, Geometrics 881 & 882, Marine Magnetics Standard and with Depth, plus many more. Refer to the Magnetometry Reference PDF or contact CTI Technical Support for details.

## FILE FORMATS

SonarWiz uses a template system for parsing magnetic formats. New templates added to the program as needed. Templates for the following are available out of the box: AquaScan, EdgeTech (JSF), GEM Systems (MagLog), Geometrics, Generic (CSV, TXT, XYZ), Hypack (RAW), Marine Magnetics, SonarWiz

Recommended PC 64bit, Win 10, DirectX11+, 8GB, SSD, USB port.

CUSTOMER FRIENDLY SUPPORT YOU CAN COUNT ON

- CUSTOM ONSITE TRAINING • WEBINARS • WORKSHOPS • TUTORIALS
- BI-WEEKLY PRODUCT UPDATES • 24/7 DOWNLOADS • FREE TRIALS

**CHESAPEAKE**  
**TECHNOLOGY**  
www.chesapeakeotech.com