

# ARIS EXPLORER 3000

*SEE WHAT OTHERS CAN'T*

## APPLICATIONS:

- ◆ Underwater Inspection
- ◆ Monitor Operations & Divers
- ◆ Construction Monitoring
- ◆ Equipment & Tool Placement
- ◆ Hull & Berth Inspection
- ◆ Environmental Monitoring
- ◆ Port & Harbor Security
- ◆ Target Identification & Classification

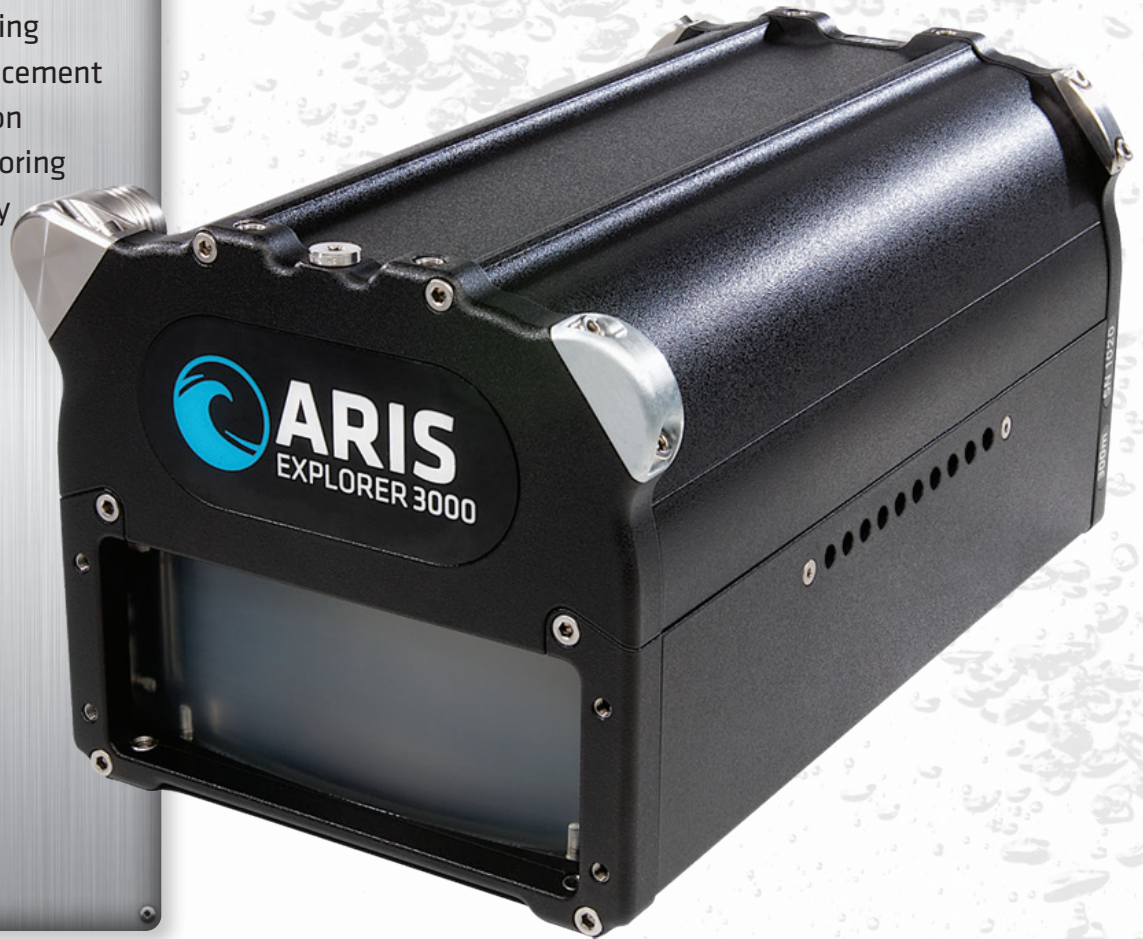
## IDENTIFICATION FREQUENCY:

**3.0 MHz**  
5 m Range

## DETECTION FREQUENCY:

**1.8 MHz**  
15 m Range

DEPTH RATING:  
**300 m**



## THE NEXT GENERATION IN CLARITY

With 128 distinct physical beams operating at 3 MHz, the ARIS Explorer 3000 can provide higher resolution than any other imaging sonar in its class with unprecedented image clarity even in dark or turbid waters. For longer range applications, Sound Metrics offers the Explorer 1800 and Explorer 1200 models. All models offer dual frequencies, dynamic focusing, multiple recording and output options, background subtraction and innovative software. Teamed with the ARIS Rotator AR<sub>2</sub> on a tripod, pole-mount or ROV, the ARIS Explorer line opens up exciting new possibilities of underwater discovery. For more information, visit [www.soundmetrics.com](http://www.soundmetrics.com).



**DIDSON Technology**

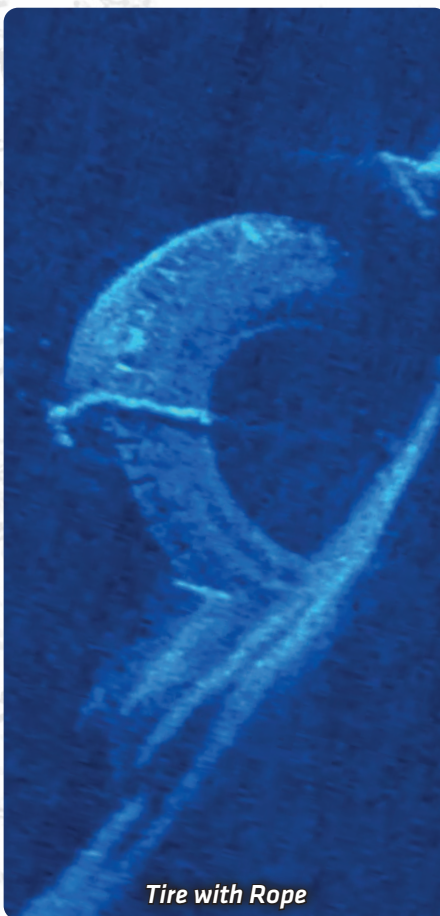
# ARIS EXPLORER 3000

## FEATURES:

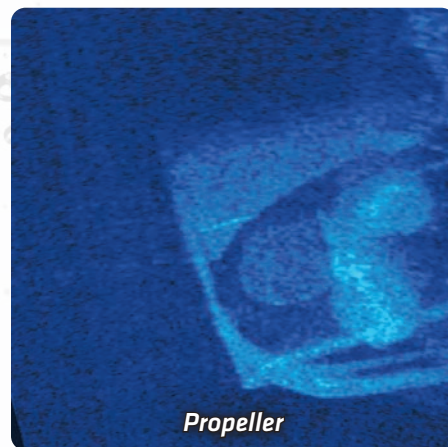
- ◆ Dual Frequency Operation:  
3.0 MHz & 1.8 MHz
- ◆ High-Definition Imagery
- ◆ Capable of Close Range Imaging
- ◆ Dynamic Focus
- ◆ Built in Compass & Depth Gauge
- ◆ Compact & Lightweight
- ◆ Low Power Requirement
- ◆ Easy Integration
- ◆ Ethernet Interface
- ◆ Windows™ Based Software

Founded in 2002, Sound Metrics is the first company to introduce a high-frequency imaging sonar to the commercial market. The DIDSON brand of imaging sonars set a new standard for excellence in underwater vision in black and turbid waters. The company recently launched the next generation of DIDSON with the release of ARIS high-resolution and high definition imaging sonars. With the ARIS product range, Sound Metrics once again sets a new standard for imaging at extremely close ranges in all types of water.

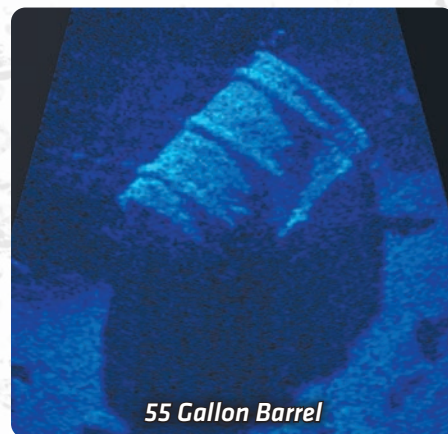
Sound Metrics strives to offer the most advanced technology along with the best support and most innovative solutions around your applications.



*Tire with Rope*



*Propeller*



*55 Gallon Barrel*

## SPECIFICATIONS:

<b>Dimensions</b>	26 x 16 x 14 cm
<b>Weight in Air</b>	5.12 kg
<b>Weight in Water</b>	1.55 kg
<b>Number of Transducer Beams</b>	128 Beams
<b>Beam Width</b>	0.25°
<b>Field of View</b>	30° x 15°
<b>Frame Rate</b>	Up to 15 Frames / Second
<b>Range Resolution</b>	Down to 3 mm
<b>Power Consumption</b>	18 W Typical
<b>Cable Length</b>	Up to 150 m
<b>Provided Power Supply:</b>	
<b>Input</b>	100 - 240 Vac
<b>Output</b>	48 Vdc
<b>Maximum Power</b>	70 W



## SOUND METRICS

www.soundmetrics.com  
425-822-3001 | sales@soundmetrics.com  
11010 Northup Way Bellevue WA 98004

