

DYNAMIC POSITIONING SYSTEM

YOUR TOOL FOR ADVANCED OPERATIONS WITH LOW FUEL CONSUMPTION

SIREHNA DP® RESULTS FROM MORE THAN 30 YEARS OF SIREHNA EXPERTISE IN HYDRODYNAMICS AND CONTROL OF MARINE SYSTEMS.

- Cost-efficient solution of dynamic positioning systems up to DP2, available for all kind of vessels for standard and special operations.
- Robust and reliable systems ready for seamless integration on board (IBS, VMS, PMS, navigation...).
- Provides a smooth and safe operator experience.
- Complete range of products and services including advanced features for ice control mode and fuel cost saving.
- Implementation and support are performed by a motivated customer-oriented team, actively listening to your needs and constraints.
- SIREHNA offers tailor-made solutions for every ship project and every operation, from ROV follow operations to virtual anchoring.

CUTTING-EDGE TECHNOLOGY FOR:

- OFFSHORE/OIL & GAS VESSELS, MPSV, OSV, FSIV, PSV, AHTS, FPSO, FSRU, LIFT-BOAT
- SUPPLY/SUPPORT VESSELS, EXPLORER VESSEL, RESEARCH VESSEL
- WORLDWIDE SUPPORT SERVICE

DYNAMIC POSITIONING SYSTEM

FULL RANGE OF CONTROL MODES



Joystick control



Park Assist



Station Keeping



AutoPilot



Anchor mode



DP repeater



Track Keeping



Auto Area



Sense & avoid

Easy to integrate

- For newbuildings or refits, compact solutions for console, wheelhouse, wingstation,
- Or Integrated Bridge System (IBS),
- With high flexibility of interfaces,
- Including complete library for VMS and navigation integration.

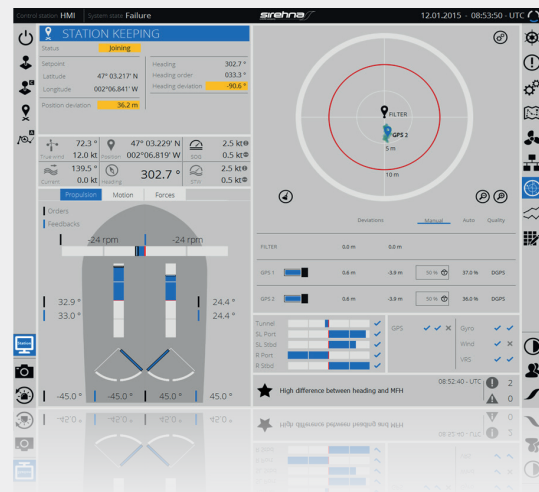
High-standard hardware configuration

- SIREHNA DP® system is based on:
- High availability COTS,
- Top level marinised embedded computers and I/O modules,
- Reduced numbers of onboard and depot spares with shared technology hardware,
- Touch-screen operator interfaces,
- Panel with three axis joystick,
- Dual redundant ethernet ring networks,
- Fixed and portable operator consoles.



Full range of functionalities

- Sensor and position reference system data processing,
- Thruster allocation and control,
- Customised Human-Machine Interface,
- DP alarm system,
- Data logger,
- Power load monitoring and blackout prevention,
- Economic heading,
- Fast learn,
- Onboard DP capability analysis,
- Onboard consequence analysis.



COMPLIANT WITH ALL CLASS SOCIETIES
& CERTIFIED BV & CCS



SIREHNA
5, rue de l'Halbrane F-44340 Bouguenais

