

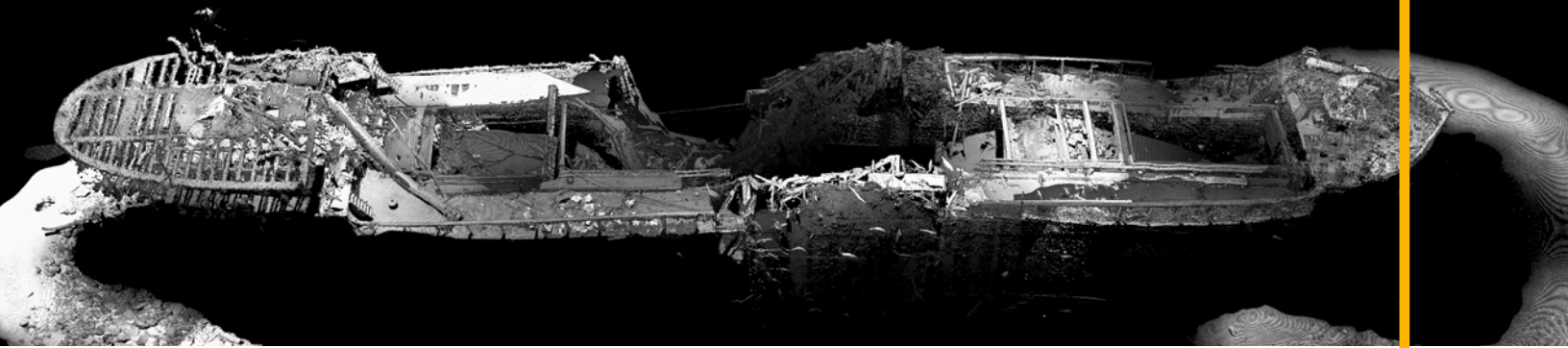


STATIC & DYNAMIC LASER SCANNERS

Insight Pro

The Insight Pro is a long range laser scanner designed for wide area 3D modelling from dynamic and static platforms. The proven design has been deployed since 2013, scanning over 10,000km of subsea pipeline, seabed, and subsea structures.

The Insight Pro has been integrated with countless AUVs and ROVs, simplifying integration with software API that enables autonomous control, and off-the-shelf support of standard vehicle navigation systems. The data is processed in real-time onboard the system to enable machine learning applications like defect detection and pipeline following.



At A Glance

An overview of the main benefits of using an Insight Pro for your project.

🕒 High-speed & long-range data


👍 Simple integration

🕒 Real-time actionable data

📅 Proven reliability on AUVs & ROVs since 2013

Specifications

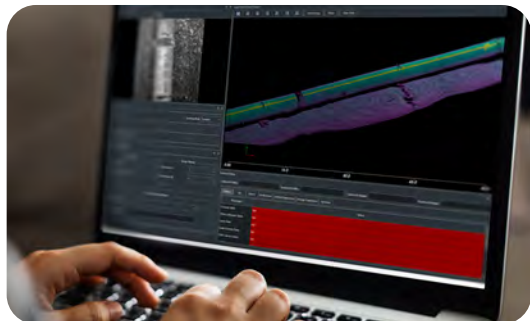
Integration drawings available - [contact sales](#)

Feature	Insight Pro	
Scan Range	1.5m - 15m	
Laser Line	2048 data points 50° angle of view	
X Resolution (Along laser line)	1.3mm @ 3m 2.3mm @ 5m 4.5mm @ 10m 6.7mm @ 15m	
Y Resolution (Profile to profile)	2.8mm @ 0.5knot 11.1mm @ 2knot 22.2mm @ 4knot	
Z Resolution (Depth Resolution)	0.2mm @ 3m 0.5mm @ 5m 1.9mm @ 7m 4.1mm @ 10m	
Profile Rate	90Hz with range limiting	
Laser 	Max output: <75mW Pulse duration: 1mSec to CW Wavelength: 450nm +/- 10nm Temperature Controlled	WARNING - LASER RADIATION AVOID EXPOSURE TO BEAM Class 3B Laser Product
Power Consumption	60W, 24-60 VDC	
Data Interface	Ethernet, TCP/IP Communication	
Weight	13kg (water), 23.1kg (air)	
Depth Rating	4000m or 6000m	
Data Storage	Network storage	
Data Acquisition	ViewLS C++ API Included Factory Calibrated	
Export Data Formats	.XYZ (CSV), LAS Publishing	
3rd Party Integration	QPS QINSy, EIVA NaviSuite, HYPACK HYSWEEP, 4D Nav	



Browse **Other** Products

For more information on all of our products visit www.voyis.com or [contact sales](#).



ViewLS

Our ViewLS software is an all-in-one software interface for directly controlling Voyis products. It gives you the ability to view the system's status and diagnostics and to view data in real-time.

[This is included with all laser scanners.](#)



Rotary Actuator

The Rotary Actuator enables stationary scanning without any aiding sensors required. The result is the same high-resolution data that dynamic scanning produces.

[Contact sales to learn more.](#)



Imaging

Our Observer imaging systems provide high resolution, crisp stills images with real-time image correction onboard. The systems are seamlessly integrated with laser systems for gapless laser data.

[Click here to learn more.](#)

Case Studies

Click on a case study to read how some of our customers have used Voyis products.

